
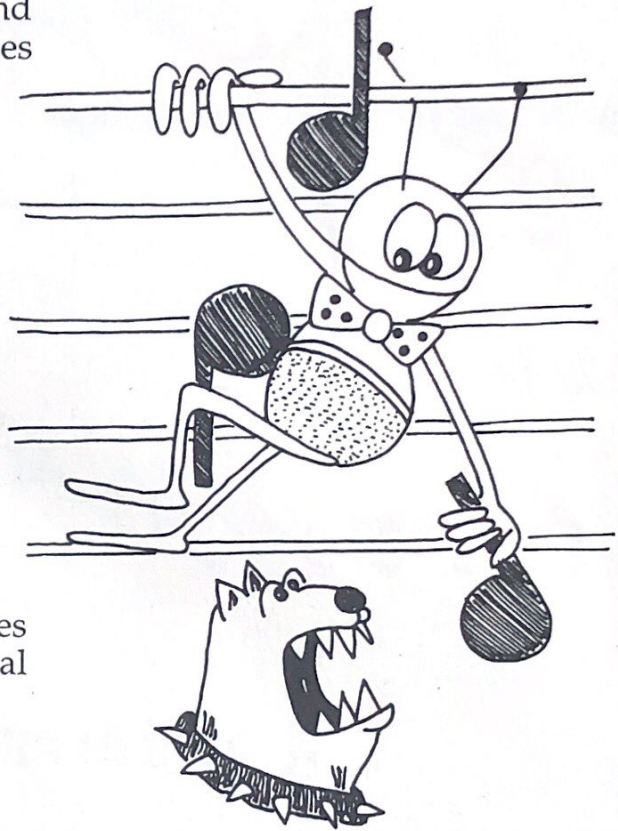
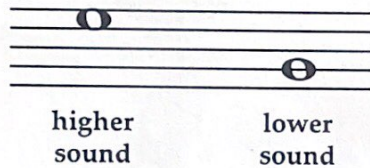


PITCH

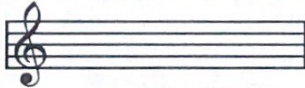
TREBLE STAFF, BASS STAFF, GRAND STAFF

In music *pitch* is how low or how high the music sounds. Composers most often place music notes on a *staff*  to indicate how high or low the sounds will be. The staff is similar to a ladder. Notes placed near the top of the staff sound higher than notes placed near the bottom of the staff. Each of the lines and each of the spaces in between the lines represent different pitches.



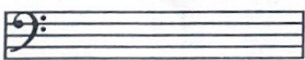
In written music, staves (sometimes called staves) are labeled in several different ways.

THE TREBLE STAFF



The *treble* staff is used for notes which sound the highest. Higher voices primarily use this staff.

THE BASS STAFF



The *bass* staff is used for notes which sound the lowest. Lower voices primarily use this staff.